

Found a Turtle?

Help us cross the road!

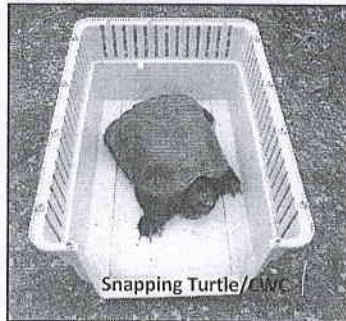


CAPE WILDLIFE CENTER



- If you see a turtle crossing the road, please move it to the other side of the road, facing in the same direction it was originally heading. (Watch for cars and be safe while helping!)
- Please do not pick up a turtle by its tail. Instead, grab the shell behind the front legs and keep the turtle low to the ground.
- If it is a snapping turtle (larger with a long tail), use something to push it along rather than handling it.
- All turtles have sharp claws and can bite, so be careful when handling.
- Turtles belong in the wild and live in established territories. Please leave turtles where you found them.

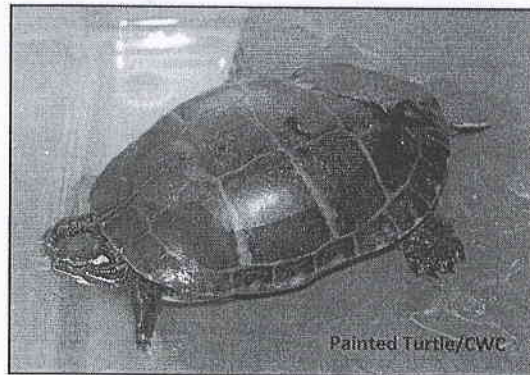
Turtles are seen crossing our roadways from April through October. In the spring, males are searching for suitable mates and establishing territories, while females are looking for the right place to build nests and lay eggs. Later in the summer, hatchlings crawl out of their nests and begin wandering, while older turtles look for suitable habitat to hibernate in over the winter.



Snapping Turtle/CWC



Diamondback Terrapin/CWC



Painted Turtle/CWC

If the turtle is injured or you have any questions, call
Cape Wildlife Center.

Remember to wear gloves when handling wildlife and if possible, leave wildlife in the wild where they belong.

Please share this to help us keep wildlife safe.